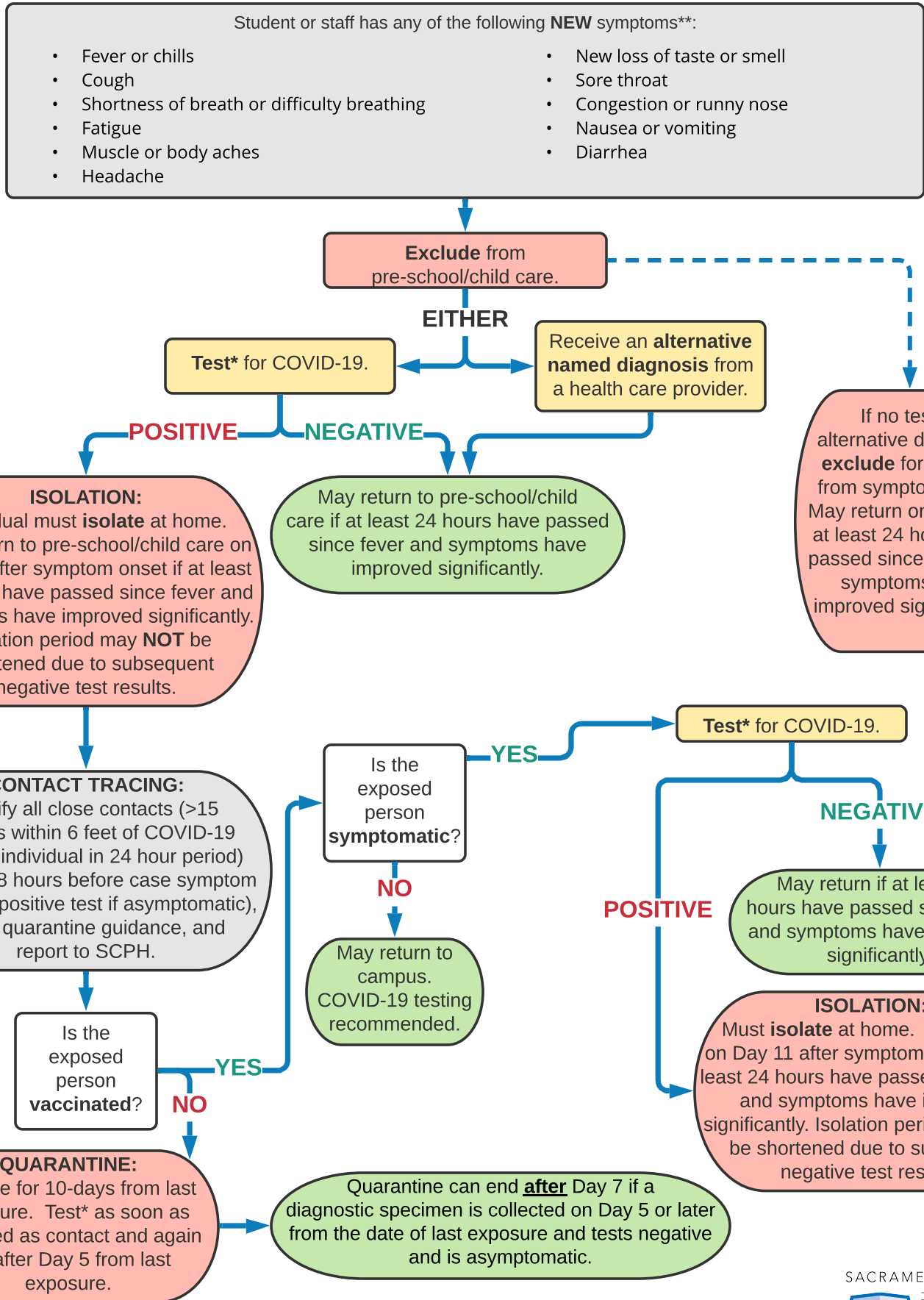


# COVID-19 Symptom & Quarantine Decision Tree for Pre-Schools & Child Care



\* PCR or rapid antigen test are acceptable.

Negative rapid antigen test only requires confirmatory PCR on patient with loss of taste or smell.

\*\* If someone had COVID-19 in the last 90 days and has symptoms, contact SCPHschools@saccounty.net for assistance.