

Deloitte.



Sacramento County

ARPA Issue Prioritization

Stacey Larsen, Emily Blumenthal & Stefanie Chang

Deloitte & Touche LLP

Agenda

- 1. Today's Goal**
- 2. Overview of ARPA Funding Process**
- 3. Summary of Survey Findings**
- 4. Prioritization Process**
- 5. Determine Priorities**
- 6. Next Steps**

Today's Goal

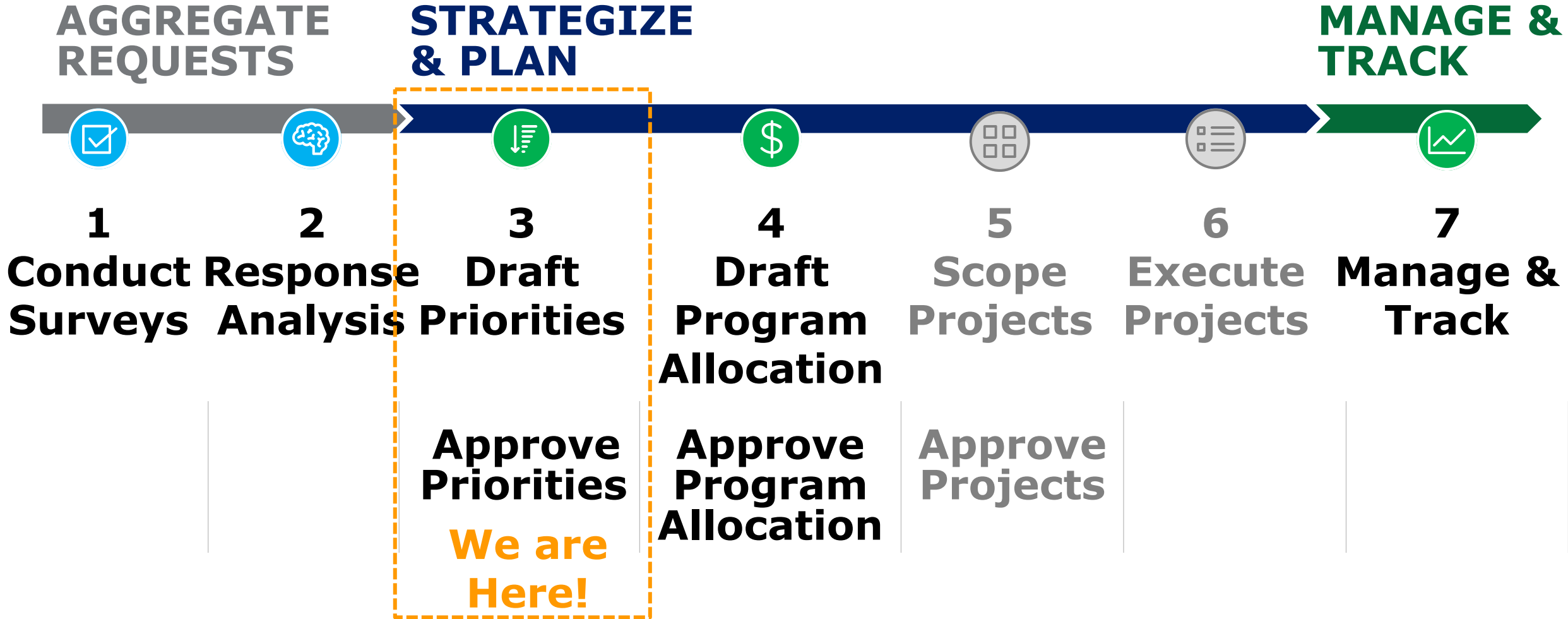
Purpose:

Determine Sacramento County issue prioritization for American Rescue Plan Act (ARPA) funding following community outreach and departmental input

Overview of ARPA Funding Process

Sacramento County's ARPA Funding Process

The goal for today's meeting is to align on priorities



Summary of Survey Findings

Survey Data Considerations

Captured:

- Contact Information
- Organizational affiliation, at respondent preference
- Narrative description of community issue & suggested solution(s)

Not captured:

- Demographic information
- Geographic information
- Incorporated vs. unincorporated areas

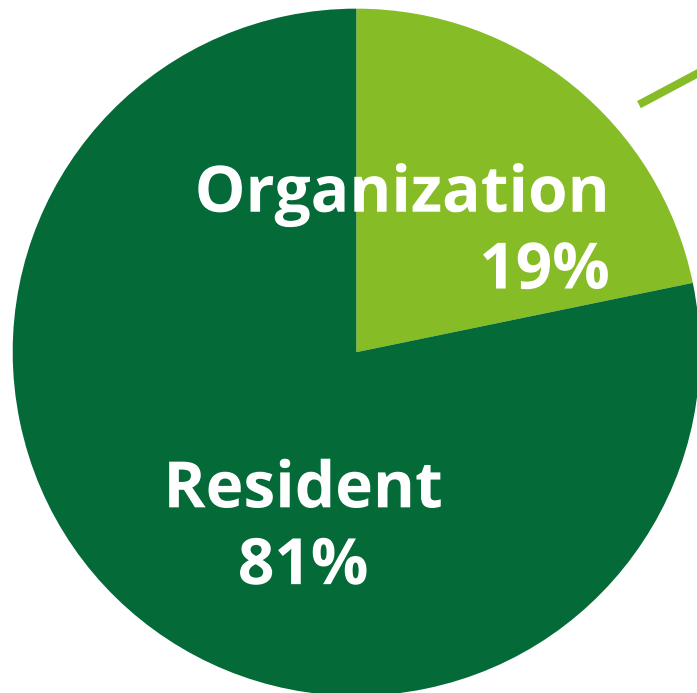
Additional considerations:

- Responses subject to interpretation
- Manual entry of responses received outside of Survey Tool
- Analysis limited to the information provided; self-reporting may not be comprehensive

Community Survey Results Snapshot

Nonprofit /community-based organizations submitted more responses than any other organization type

Total Respondents **1,519**



49% Non-Profit/ Community Based

22% Organizations Business/
Chambers of Commerce

10% Governmental Organizations

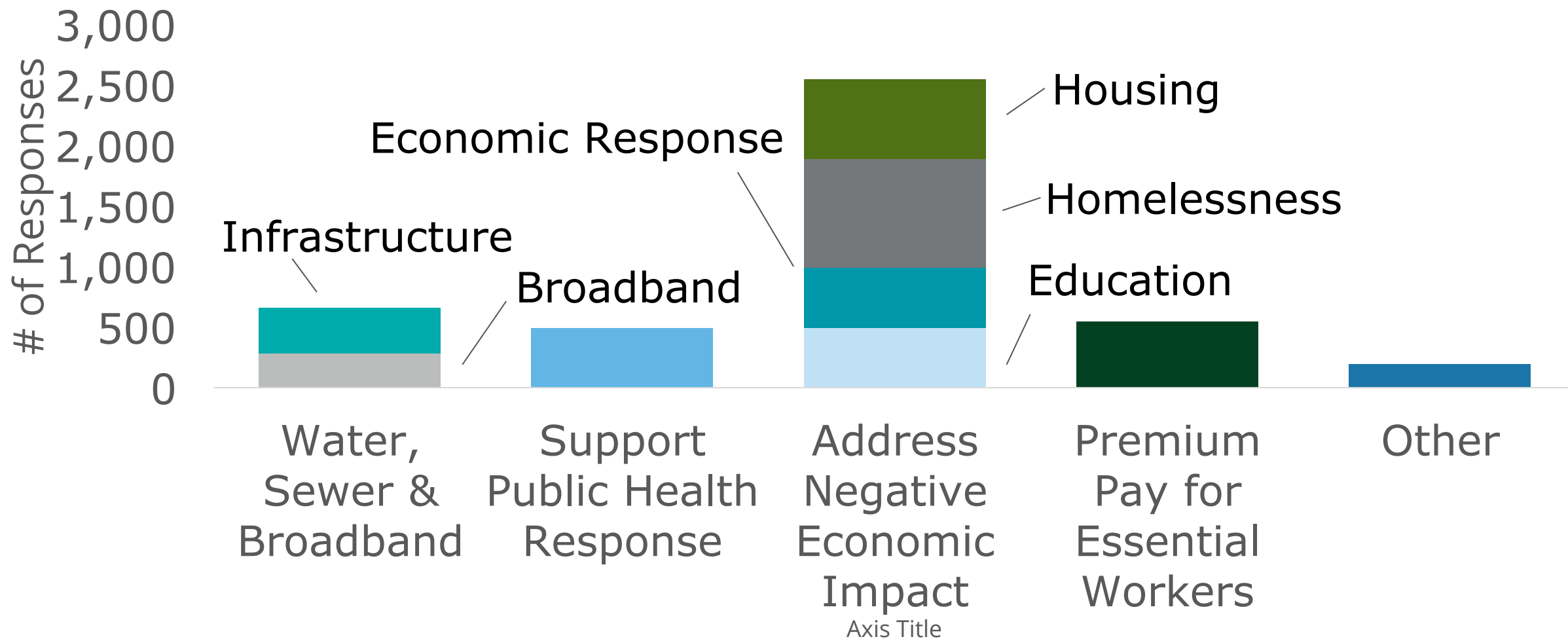
11% Faith Based Groups

7% Healthcare Provider

1% Unions

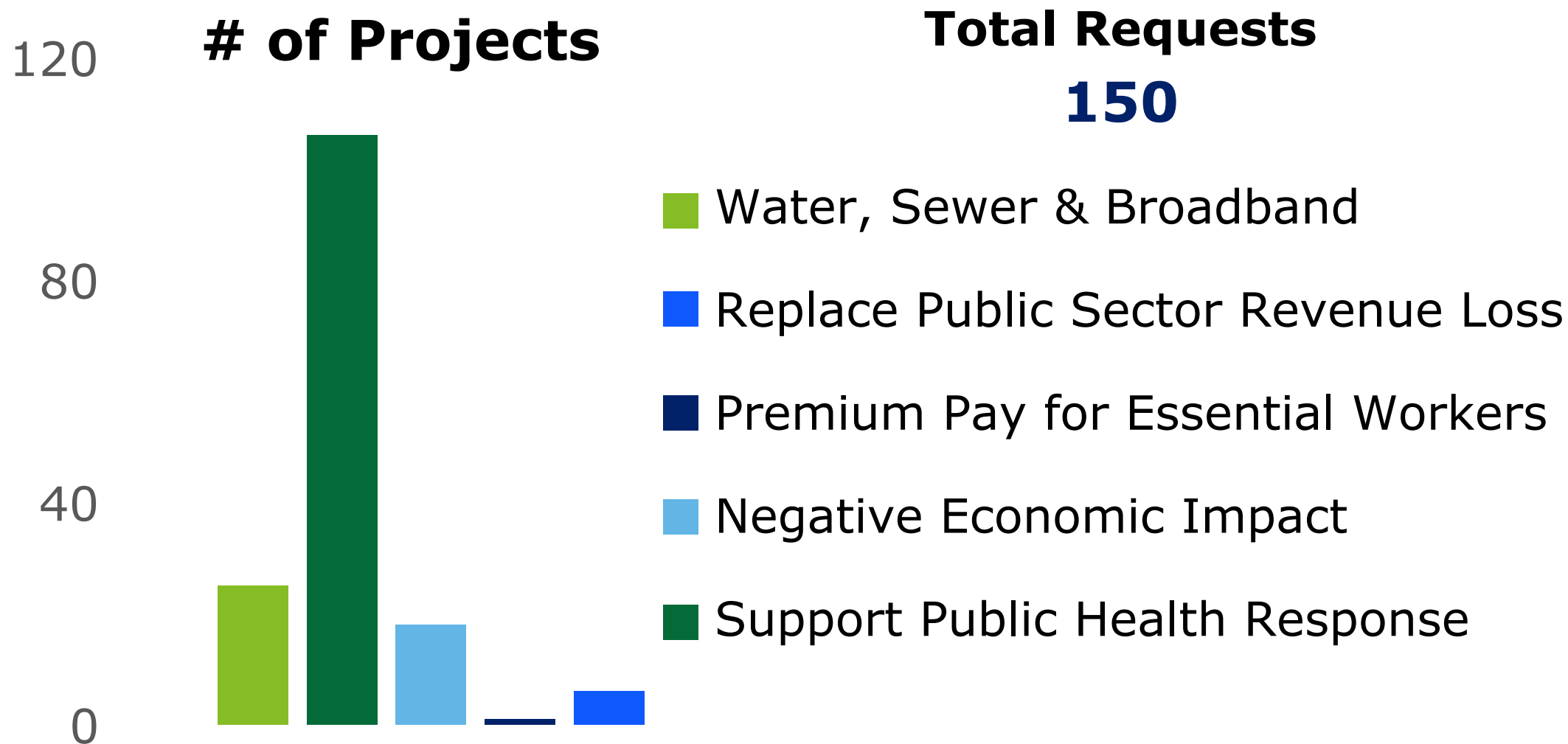
Community Survey Results Snapshot

Homelessness and housing were the top two community issues identified



Department Survey Results Snapshot

Public Health-related projects were the most popular response



Overview of Prioritization Process

Issue Prioritization Process

Priorities are identified via a three-step process



Quantitative Analysis

Deloitte

- Community Survey analysis
- Calculated Draft Priority List

Subject Matter Expertise Analysis

County Leadership & Deloitte

- County expertise
- Department Survey analysis
- Reviewed Draft Priority List

Decision-Making

Board of Supervisors

- All prior input
- Decision:**
- Approve Priority List

We are Here!

Output Input Who

Discussion of Priorities

Key Considerations

What is important to consider when prioritizing issues?

Other Funding Opportunities

How much to set aside for administrative expenses?

Do other funding sources better address these needs?

Will the County receive the full \$300M?

Eligibility

Are proposed activities eligible?

Feasibility

Does the County have the resources to complete these projects in the required timeframe?

Draft Priority List (for BOS review)

Housing, Homelessness & Health emerge as top priorities



1 Housing



5 Essential Workers



2 Homelessness



6 Infrastructure



3 Health



7 Education



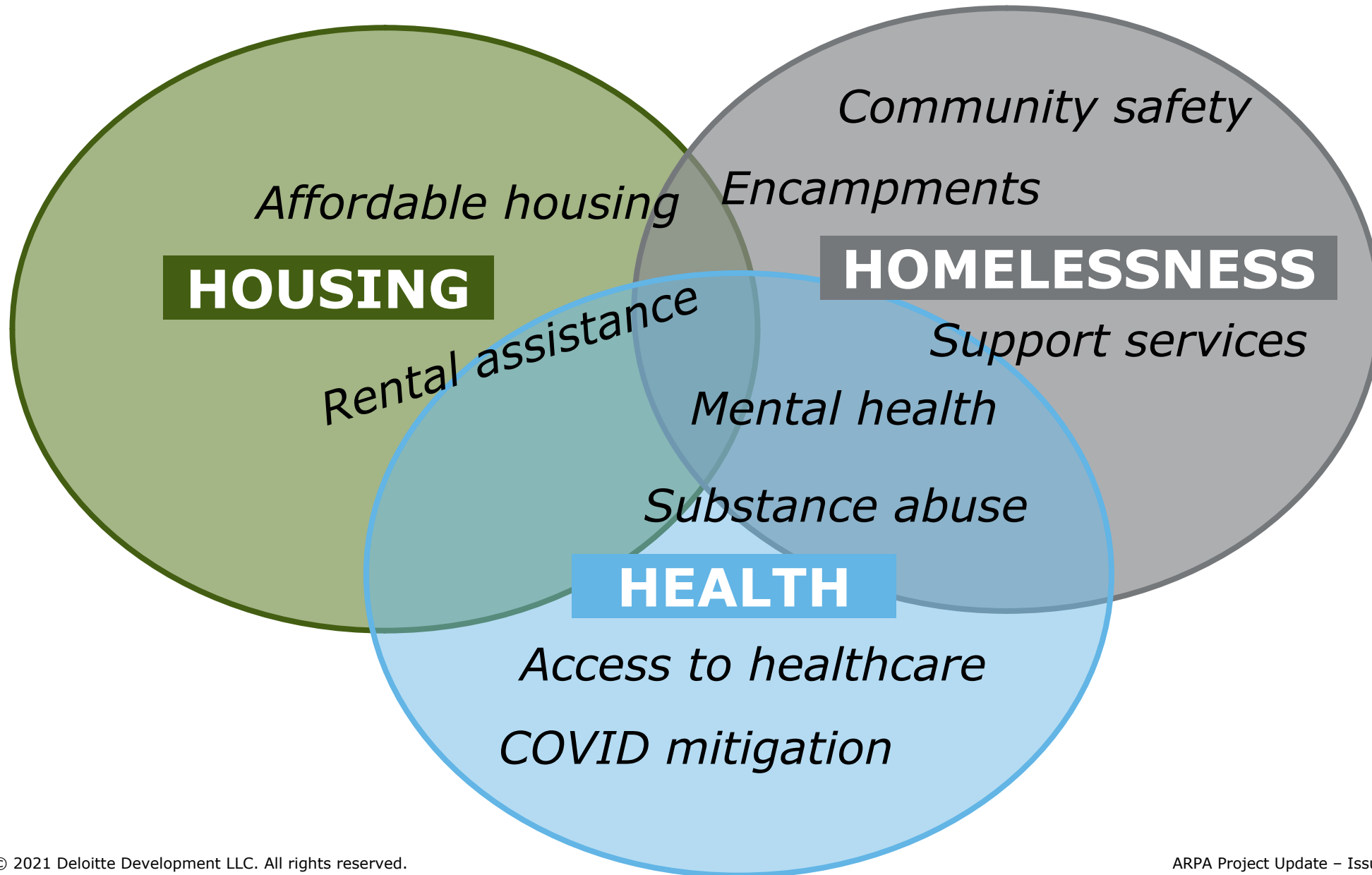
4 Economic Response



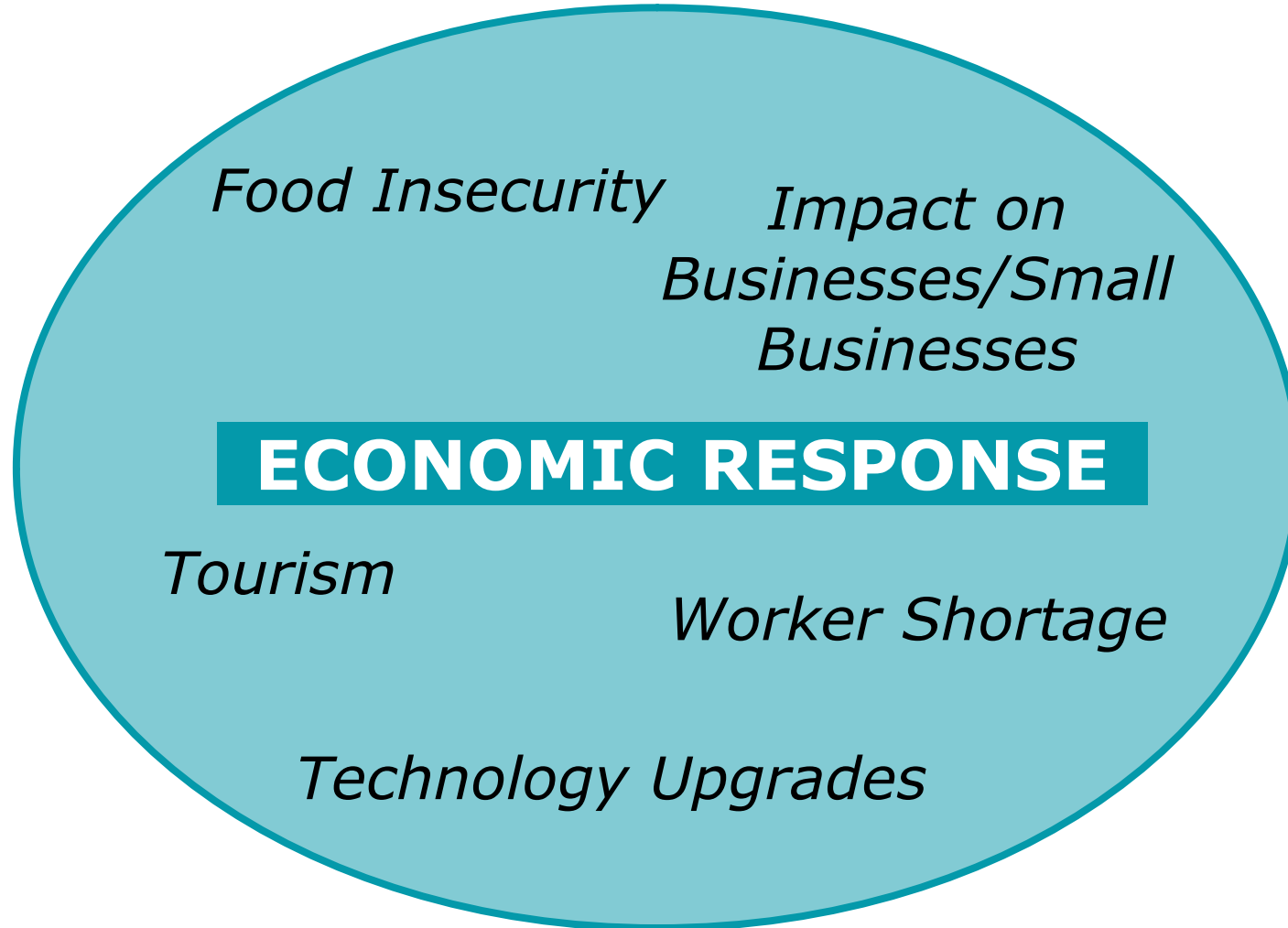
8 Broadband

There are core values that should be incorporated across all issues

Intersectionality of Housing, Homelessness & Health



Economic Response



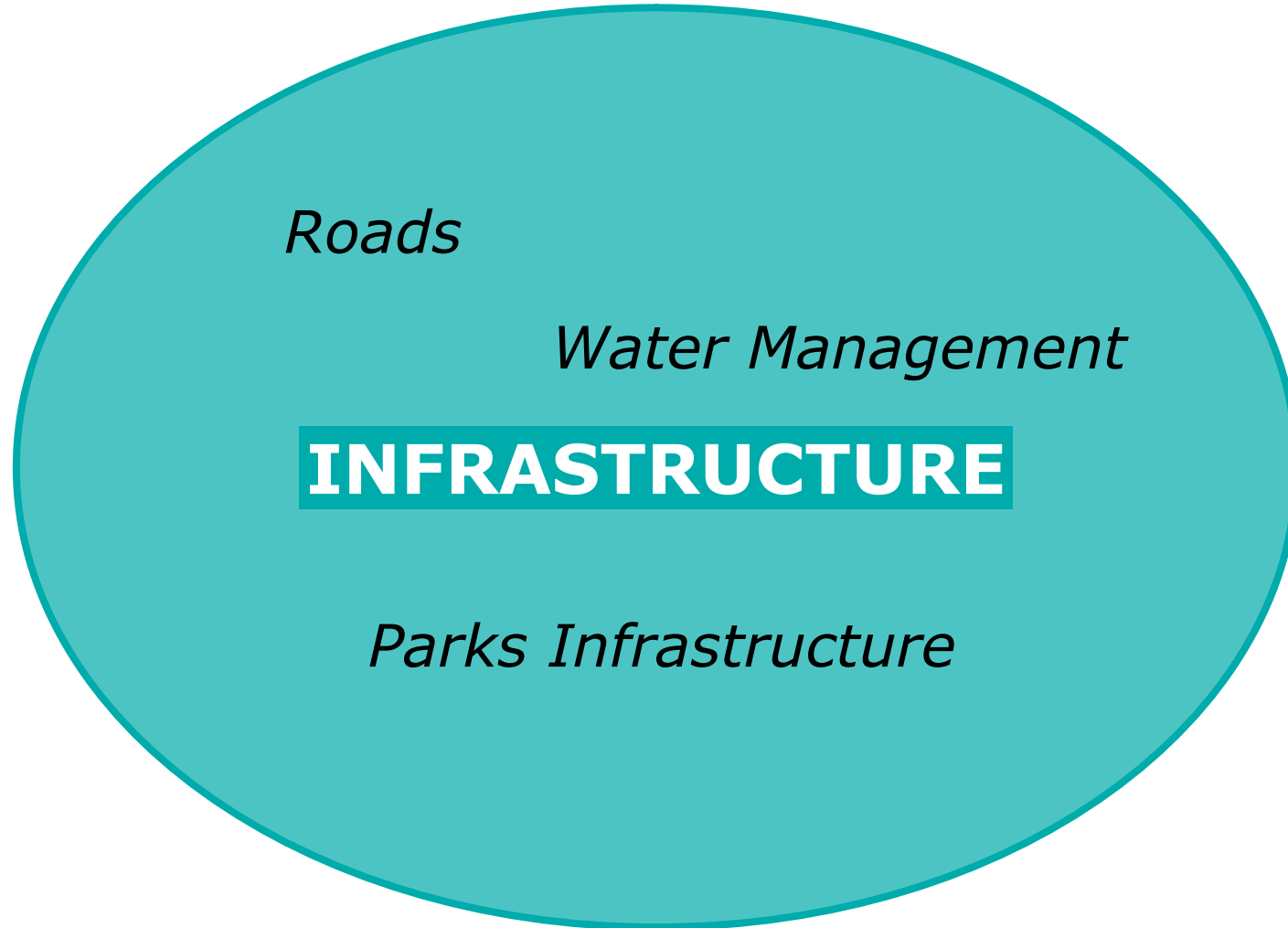
Essential Workers



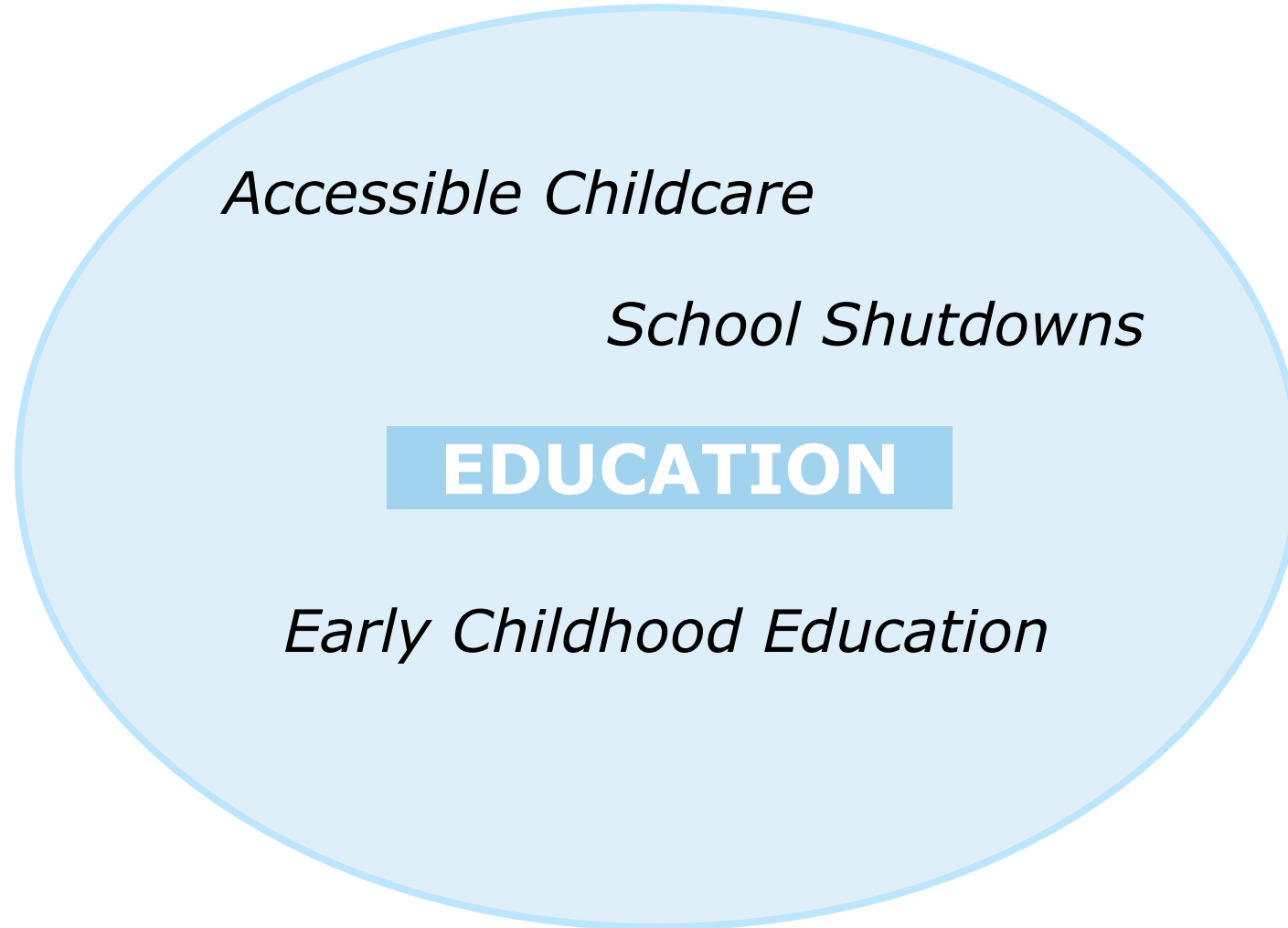
ESSENTIAL WORKERS

Premium Pay

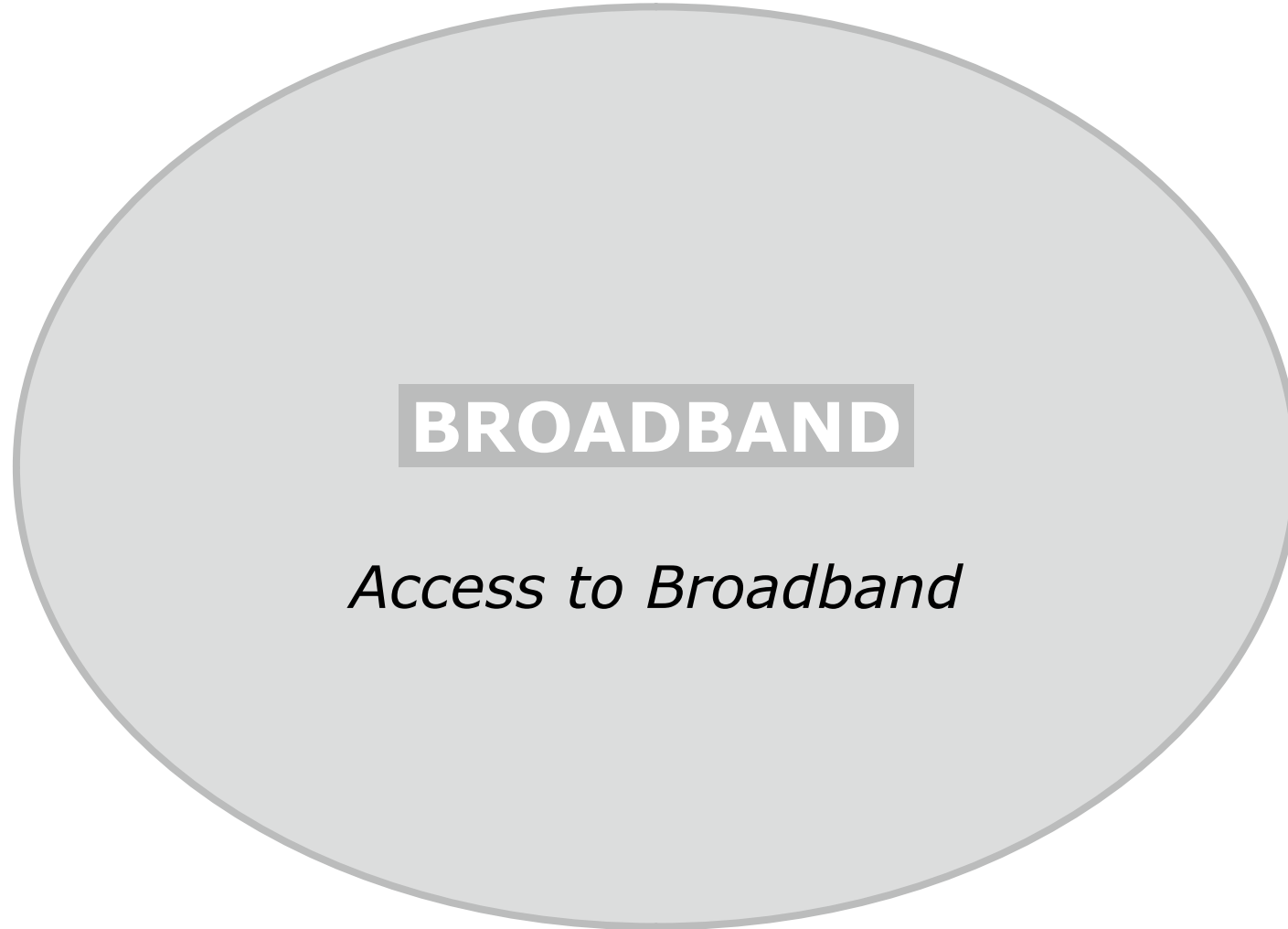
Infrastructure



Education



Broadband



Next Steps

Sacramento County's ARPA Funding Process

The next step will focus on determining program allocation amounts





Deloitte refers to one or more of Deloitte Touche Tohmatsu Limited (“DTTL”), its global network of member firms, and their related entities (collectively, the “Deloitte organization”). DTTL (also referred to as “Deloitte Global”) and each of its member firms and related entities are legally separate and independent entities, which cannot obligate or bind each other in respect of third parties. DTTL and each DTTL member firm and related entity is liable only for its own acts and omissions, and not those of each other. DTTL does not provide services to clients. Please see www.deloitte.com/about to learn more.

Deloitte is a leading global provider of audit and assurance, consulting, financial advisory, risk advisory, tax and related services. Our global network of member firms and related entities in more than 150 countries and territories (collectively, the “Deloitte organization”) serves four out of five Fortune Global 500® companies. Learn how Deloitte’s approximately 330,000 people make an impact that matters at www.deloitte.com.

This communication contains general information only, and none of Deloitte Touche Tohmatsu Limited (“DTTL”), its global network of member firms or their related entities (collectively, the “Deloitte organization”) is, by means of this communication, rendering professional advice or services. Before making any decision or taking any action that may affect your finances or your business, you should consult a qualified professional adviser. No representations, warranties or undertakings (express or implied) are given as to the accuracy or completeness of the information in this communication, and none of DTTL, its member firms, related entities, employees or agents shall be liable or responsible for any loss or damage whatsoever arising directly or indirectly in connection with any person relying on this communication. DTTL and each of its member firms, and their related entities, are legally separate and independent entities.